

Control 4<sup>®</sup>

---

# Table of Contents

Control4 X4 (OS 4.1) Release Notes .....	2
1 Introduction .....	2
1.1 End-of-Life Devices .....	3
2 New Driver Migration Agent for Lux Lighting .....	3
3 Composer Pro Decoupled From OS .....	4
4 Bugs Resolved .....	5
5 Life Cycle Changes .....	7
6 Upgrade Path .....	7
7 Software Product Release Versions .....	8
Technical Support Contact Information .....	12
Warranty and Legal Notices .....	12

## Control4 X4 (OS 4.1) Release Notes

### 1 Introduction

OS 4.1 delivers significant platform enhancements designed to boost performance, reliability, and readiness for future capabilities, while also incorporating critical infrastructure updates. This release introduces support for the First Alert Pro Series PROA7, expanding device compatibility. At the same time, support for EA On-screen experience, the T3 touch screen, and Gen1/Gen2 devices has officially ended; these legacy platforms will no longer receive software updates or technical assistance. To benefit from ongoing improvements and new

features, customers are encouraged to transition to Gen3 or newer hardware. It also introduces foundational compliance support for the EU Radio Equipment Directive (RED) 2014/53/EU, ensuring systems meet essential wireless communication standards and maintain alignment with evolving international requirements

## 1.1 End-of-Life Devices

Control4 X4 is the terminal build for the devices listed below:

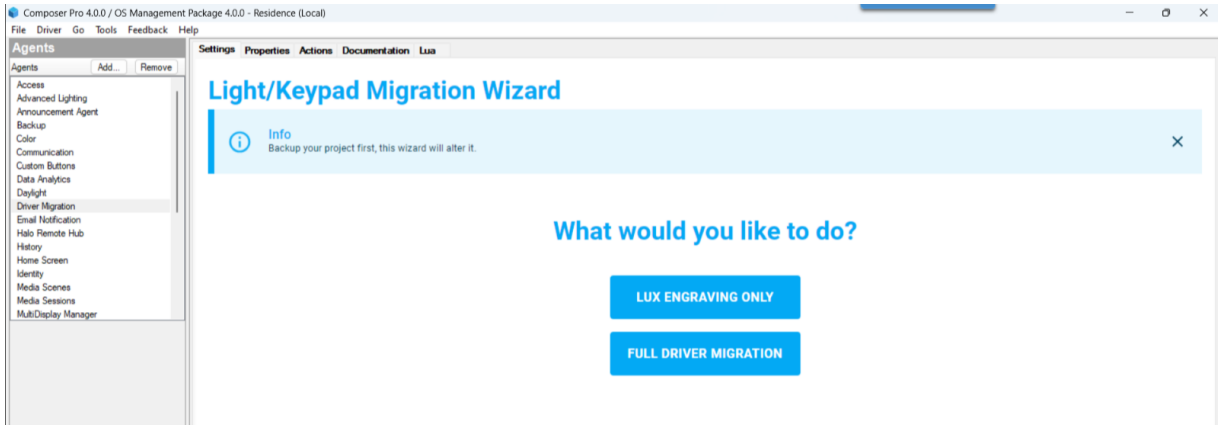
- Control4 T3 Touchscreens (In-Wall and TableTop, 7" and 10")
- Control4 Dimmers, Switches, and Keypads (Gen 1 and Gen 2)
- OnScreen Display (OSD) for Control4 EA-1, EA-3, and EA-5 Controllers (v1 and v2) will be removed, but the controllers will continue to be supported.

Visit <https://ctrl4.co/resources-x4> for additional info.

## 2 New Driver Migration Agent for Lux Lighting

The Driver Migration agent adds the Light/Keypad Migration Wizard to streamline the process of upgrading Control4 Gen1, Gen2, and Gen3 lighting and keypad devices to Lux lighting by automating the transfer of device properties, lighting scenes (excluding flashing scenes), keypad button configurations, device connections, and programming logic. It includes a dedicated engraving-only step for Gen3 devices to facilitate engraving orders before completing the migration. Dealers must install the Driver Migration agent via Com-

poser Pro and ensure all devices are added to the project before starting. The Light/Keypad Migration Wizard guides users through selecting source and target devices, reviewing compatibility and warnings, and executing the migration.



**Pro Tip:** Validate all engraving text to ensure you don't have string length errors.

**Pro Tip:** Use Composer to edit any engraving or button layout you desire to change

**Pro Tip:** The project now has a new device for each migrated device in the project, and they are all hidden from Navigator.

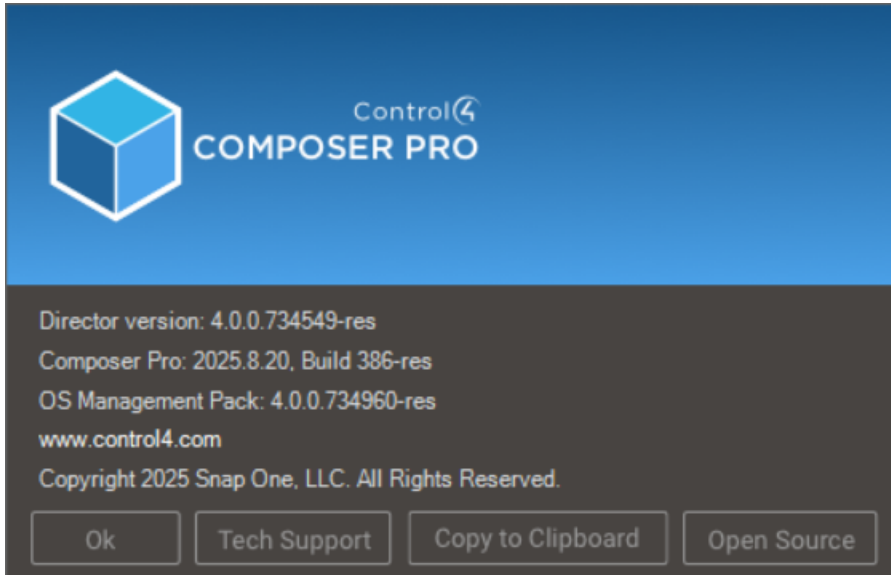
Visit <https://ctrl4.co/lux-migration> for additional info.

### 3 Composer Pro Decoupled From OS

Composer Pro version is now decoupled from OS version and is moving for a date-based versioning and more frequent releases for easier maintenance of Composer Pro builds, and bet-

ter provide potentially quicker fixes for Composer Only bugs. Composer Pro OS Maintenance Packages will still align for proper usage with OS versions. However, Composer Pro builds will be able to be created independently of OS builds and vice versa.

Please note the changes in Composer Pro build numbering that comes with this change to correctly select the updated Composer Pro.



## 4 Bugs Resolved

This is the list of bugs resolved over the course of our X4 release.

SYS-11213 Info binary is missing

SYS-10927 Issues with native music streaming services

SYS-10541 Missing weston screenshot in sysman snapshot

SYS-9802 SA1 | eARC | AppleTV | No voices heard from some movie trailers (no audio at all from others)

QT-1693 Empty squares on OSD screen leads to Settings

QT-1684 Shades Icon Button Press in UI selects settings page in UI

LIGHT-4706 Auxiliary Keycap Color not Staying after changing to another color

LIGHT-4691 Editing advanced lighting scenes causes director to crash

LIGHT-4671 Unable to edit Button Names in all Decora Lighting drivers with keypads after adding or selecting the Down/Up button on the assembled keypad.

LIGHT-4657 Engraving rocker and 3H button on same keypad (overlapping)

INT-39 X4 Scheduler Events not firing consistently

EMCOMM-3695 Zwave Common Light Control method =Level. When turn on Light from dimmer directly instantly turns off

EMCOMM-2937 Latency Metrics Behave Oddly With Offline Nodes

DRIV-12961 Driver update agent may not indicate update occurred

CS-12996 Freeswitch unregistering a LOT

CI-30894 Android: When renaming routines you get an error after deleting the original name

CI-30674 Discussions: Landscape camera view on Android not centered

CI-28514 If you favorite a lighting scene to the room that is not part of a "room navigator" from any device if you refresh navigator/wait day or two it disappears

C4OS-14703 New Required Lua Agents aren't auto added on OS update.

C4OS-14165 Do not send component install metric on "already installed"

C4OS-13938 lumabridge service is started twice after a reboot in some cases

C4OS-13351 Scheduler agent: System Update Event has multiple days set

AV-10654 Core Lite driver: TuneIn Keeps Reinstalling itself

AV-10636 SA1: Subwoofer output is playing with AirPlay 2 when it shouldn't

AV-10602 Control4 X4 - Push Notification Bell icon isn't turning off notifications

AV-10569 All Sound Stopped in Living Room Apple Music

AV-10314 AV-10314

AV-10297 AV Pathing - selecting Roku App Switcher (SELECT\_SOURCE) crashing director

AV-10292 Audio Cutting In and Out with SA1, AirPlay2, and MoIP Amp Zoned Configuration

AV-10271 Comm. Agent controls in the dialog should be greyed out (info only)

## 5 Life Cycle Changes

**Note:** Keep in mind that OS 4 is the terminal release for Gen1 and Gen2 lighting devices, EA OSD, and T3s.

## 6 Upgrade Path

**Note:** The system must have an active Connect subscription

**Note:** To upgrade to X4 (OS 4.1), current Control4 systems must be OS 4.0 or higher.

# 7 Software Product Release Versions

Control4 software releases (since 3.x)		
Release 3.0.x		
Tuesday, May 22, 2019	3.0.0.562835-res	Initial Release – New user experience and Composer enhancements.
Friday, June 11, 2019	3.0.0.563304 -res	Maintenance Release that supersedes the previous 3.0.0.562835-res version.
Release 3.1.x		
Wednesday, September 11, 2019	3.1.0.566775-res	Initial Release – CA-10, Google Assistant, Composer Pro version independence, Intercom Anywhere expansion, OSD lighting, Sessions, pinch and zoom on Android.
Tuesday, September 17, 2019	3.1.1.569774-res	Maintenance Release – Security update with default password removal. OSD room change.
Wednesday, March 4, 2020	3.1.2.571828-res	Maintenance Release – Over the air update, faster camera snapshots, and defect fixes.
Wednesday, May 27, 2020	3.1.3.574826-res	Maintenance Release – Access Agent, Composer package man-

		agement structure changes, component updates for OSD and T3, and defect fixes.
Release 3.2.x		
Tuesday, October 13, 2020	3.2.0.586513-res	Full Release – Video doorbell, Control4 OS 3 Mobile App with Intercom, History View, SR-260 volume feedback, Driver add Driver SDK.
Monday, December 7, 2020	3.2.1.589103-res	Maintenance Release – Support for the T4 touchscreens and defect fixes.
Tuesday, February 23, 2021	3.2.1.592369-res	Maintenance Release – Support for new T4 8” touch screen
Wednesday, March 24, 2021	3.2.1.593279-res	Maintenance Release – T4 touch screen backlight adjustment
Tuesday, May 25, 2021	3.2.2.598005-res	Maintenance Release – OvrC Pro on controllers, Ambient Light Sensor source and followers, Centralized Lighting and Gateway security, Zigbee Health, Device Logs, Access Agent support for thermostat schedule and presets
Wednesday, September 22, 2021	3.2.3.606460-res	Maintenance Release – MultiDisplay Manager (public beta), EQ Controls, Driver Search, Connection

		Filters, Feedback Menu, Productivity Folder, Lighting Keypad Widget, Dynamic AV Buttons, Night Mode, and Hebrew Language.
Thursday, December 2, 2021	3.2.4.612716-res	Maintenance Release – MultiDisplay Manager Release and defect fixes
Release 3.3.x		
Wednesday, June 8, 2022	3.3.0.628678-res	Full Release – CORE Controllers, Colored Lighting, Remote Connection Screen, and Zigbee Configuration Change
Wednesday, September 28, 2022	OS 3.3.1.639488-res	Maintenance Release – Version 2 of Z-wave, Recently Played, Lighting Scenarios, Color Gamut, Default Wallpapers
Wednesday, January 18, 2023	OS 3.3.2.651066-res	Maintenance Release – Ryff to MoIP, Halo Remotes, x20 Camera, Dynamic URLs, Live Thumbnails, Single Camera View, Camera Tile Reordering
Wednesday, April 19, 2023	OS 3.3.3.660628-res	Maintenance Release – Flyout menu, Bug Fixes
Wednesday, September 13, 2023	OS 3.4.0.681769-res	Full Release – System notifications, Terminal Removed, Mobile

		Updates, and Bug Fixes
Wednesday, Jan 10, 2024	OS 3.4.1.701303-res	Maintenance Release – Bug fixes
Tuesday, Feb 27, 2024	OS 3.4.1.705920-res	Re-release of OS 3.4.1 to fix 8" T4 Jitter issue, and Composer HE connectivity issue.
Tuesday, Apr 23, 2024	OS 3.4.2.709259-res	Maintenance Release – SA1 Now Playing and bug fixes.
Thursday, May 2, 2024	Composer only 3.4.2.709259-res	Maintenance Release - unregister legacy accounts.
Wednesday, Nov 20, 2024	OS 3.4.3.727848-res  Composer 3.4.3.727851-res	Maintenance Release - bug fixes and Advanced Lighting scene toggle change
Tuesday, April 15th 2025	OS 4.0.0.734549	Full X4 Release – New UI including Airplay2, Home Screen, Routines, and In-app Voice Setup & Management
Wednesday, September 3rd 2025	OS 4.1.0.742565	Maintenanace Release-EOL EA-OSD, Gen1, Gen2 and T3

---

# Technical Support Contact Information

If you encounter any issues during or following the update, or if you have any questions, please contact Control4 Technical Support for assistance.

Chat and Community support	<a href="https://tech.control4.com">tech.control4.com</a>	9 AM - 8 PM EST
Phone: USA	(888) 400-4072	9 AM - 8 PM EST
Phone: UK	+44 1347 300001	9:30 AM - 6 PM GMT
Phone: AUS	+61 18 0099 0548	8 AM - 8 PM AEDT

For support in regions covered by a distribution partner, contact your distributor.

## Warranty and Legal Notices

Find details of the product's Limited Warranty and other resources such as regulatory notices and patent and safety information, at [snapone.com/legal](https://snapone.com/legal) or request a paper copy from Customer Service at **866.424.4489**.

Copyright©2025, Snap One, LLC. All rights reserved. Snap One and its respective logos are registered trademarks or trademarks of Snap One, LLC (formerly known as Wirepath Home Systems, LLC), in the United States and/or other countries. 4Store, 4Sight, Control4, Control4 My Home, SnapAV, Araknis Networks, BakPak, Binary, Dragonfly, Episode, Luma, Mockupancy, Nearus, NEEO, Optiview, OvrC, Pakedge, Sense, Strong, Strong Evolve, Strong VersaBox, SunBriteDS, SunBriteTV, Triad, Truvision, Visualint, WattBox, Wirepath, and Wirepath ONE are

also registered trademarks or trademarks of Snap One, LLC. Other names and brands may be claimed as the property of their respective owners. Snap One makes no claim that the information contained herein covers all installation scenarios and contingencies, or product use risks. Information within this specification subject to change without notice.

250902

